



ENGIRISE

ENGIRISE

SKID STEER LOADER

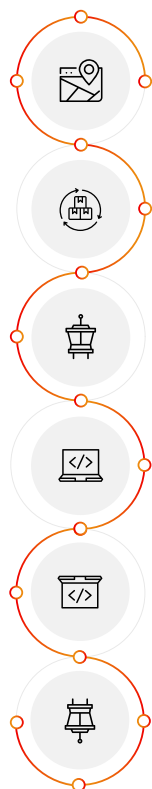
Model Name: SL75

CUSTOMIZABLE, COMFORTABLE & EFFICIENT

SL75 wheel skid steer loader has a reinforced body, lift design, 1050kg capacity and 0.5 cbm bucket. Its 63kW Kubota V3600 engine with Rexroth motor and pump provides strong power, smooth hydraulics and steady performance.

The enclosed cabin, LED lights and mechanical quick hitch enhance comfort and safety. With cooling and dependable cold-start, the SL75 works year-round, offering high productivity in tough sites.

Advantages:



High Lifting Efficiency:

With a 1050kg capacity and vertical lift design, it offers better stability and higher loading reach.

Powerful Engine:

The 63kW Kubota V3600 engine ensures strong performance and fuel efficiency for demanding jobs.

Smooth Hydraulic Operation:

Rexroth motor and pump provide precise control and quick response.

Operator Comfort:

Enclosed cabin improves safety and comfort in all weather conditions.

Easy Attachment Changes:

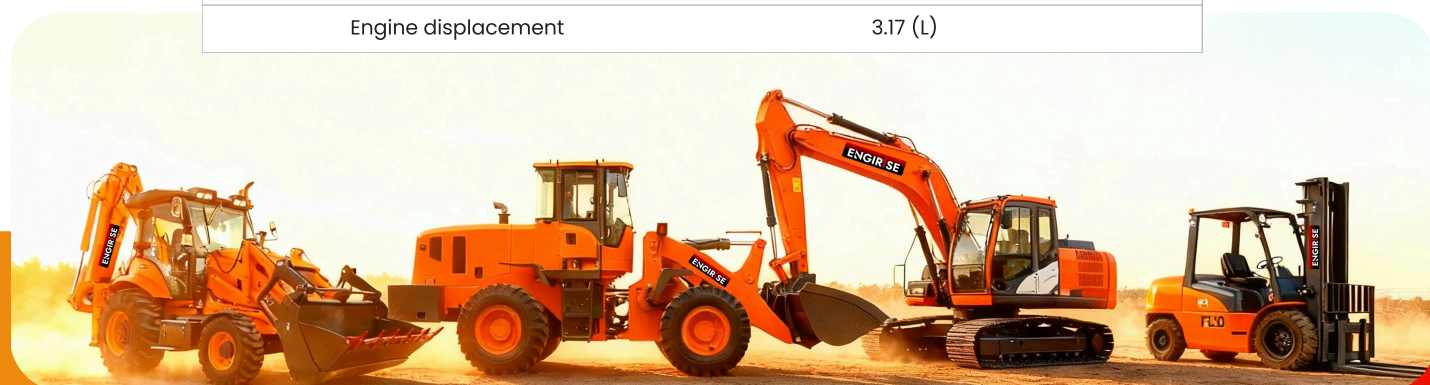
Mechanical quick hitch allows fast and convenient switching of attachments.

Improved Visibility:

LED lights ensure clear visibility for safe night or low-light operations.

Parameters Of Product:

| Parameter | Value |
|----------------------|------------------|
| Operating weight | 3800 (kg) |
| Rated load | 1050 (kg) |
| Bucket capacity | 0.5 (m³) |
| Tire (track) model | 12-16.5 |
| Max Speed | 12/18 (km/h) |
| Max traction | ≥28.2 (kN) |
| Max breakout | ≥20 (kN) |
| Lifting time of boom | 7 (s) |
| Manufacturer | Xinchai |
| Model | A498BZG/T |
| Rated power | 55/2500 (kW/rpm) |
| Engine displacement | 3.17 (L) |



| | |
|-------------------------------------|-----------|
| Emission Standard | China II |
| Overall operating height | 4070 (mm) |
| Height to bucket hinge pin | 3150 (mm) |
| Height to top of cab | 2160 (mm) |
| Height to bottom of level bucket | 2983 (mm) |
| Without bucket length | 2880 (mm) |
| Overall length with bucket | 3580 (mm) |
| Dumping angle at maximum height | 40 (°) |
| Dumping height | 2450 (mm) |
| Dumping reach | 700 (mm) |
| Rollback o bucket on ground | 30 (°) |
| Rollback of bucket at full height | 104 (°) |
| Wheelbase | 1115 (mm) |
| Ground clearance | 205 (mm) |
| Angle of departure | 20 (°) |
| Front turning radius without bucket | 1250 (mm) |
| Front tuning radius | 2112 (mm) |
| Rear tuning radius | 1774 (mm) |
| Rear axle to bumper | 1082 (mm) |
| Tread width | 1500 (mm) |
| Width | 1880 (mm) |
| Bucket width | 1880 (mm) |

SL75 SKID STEER LOADER

Customizable, Comfortable & Efficient



About Us

Founded in 2014, Engirise is a global manufacturer delivering industrial machinery that powers industries worldwide. Our mission is to redefine industrial solutions through innovation, quality, and customer success.

Driven by engineering excellence, we empower industries to build smarter, safer, and more sustainable futures.

Connect With Us

✉ info@engirise.world | 🌐 engirise.world